

**Customer ready
e-Business solutions**

ProphecyOpen



Prophecy

1

Technology For Change

The pace of change we expect in the future needs new applications architecture to support it.

This new architecture is based on software components. Software will be assembled from pre-existing components, rather than re-written from scratch, again and again. The business applications must be separate from the underlying technology, so that they can be put together without restriction. The benefits of this approach are clear - software will be quicker to develop, smaller, far more flexible, and very importantly, more robust. All this means that you will be able to implement changes more quickly, and more accurately than ever before.

ProphecyOpen is one of the new breed of enterprise applications, made up of a library of business 'object components', covering the major areas of your business. It is delivered as a fully featured business application, complete with a full range of business tasks, so you can start using it with a minimum of effort.

“With ProphecyOpen, your decisions are based on the benefits to your business, not on the restrictions of your software.”

You also get the components we used to build ProphecyOpen, so you can put them together as you wish, making your own business tasks. These components can be used as they come, or changed and extended without the need for expensive programming. So, when your business needs to change, your software can change with it, without huge expense and a building full of programmers.

What's different about ProphecyOpen?

There are a number of business application packages on the market today, and they will all perform the basic functions you expect. And of course, the salespeople are all telling you theirs is the best. So how do you decide which way to go?

Once you get past the important factors of functionality and reliability, you need to consider the real effect your choice will have on your organization. This is where ProphecyOpen really impresses.

2

Cost of Ownership

The cost of a financials system these days extends far beyond the initial purchase price. When comparing systems, be sure to calculate the Cost of Ownership of each alternative over 5 years. If you haven't already researched this area, you will be amazed at the total cost of some products.

Implementation might take years instead of months, driven by the need to change your organization to fit the Software.

This is where the tailoring facilities in ProphecyOpen really pay off. Why should you have to pay expensive consultants or programmers large sums to modify your system every time your business needs change?

A number of packages claim to be 'highly tailorable'. Often, tailorability is another word for lots of expensive consulting and reprogramming. Contrast this with ProphecyOpen, which caters for your business needs, and the personal needs of individual users without reprogramming and enhancements.

ProphecyOpen's user-driven tailoring facilities mean that your own staff can change the system to meet your needs. As well as saving money, this means that the people who understand your business best are the ones making the changes. Of course, if you prefer to have outside help, your ProphecyOpen supplier has fully trained consultants available to assist.

Ease of Implementation

ProphecyOpen is delivered to you in a ready to use state, and you can implement it without technical knowledge. 'One of everything' is provided - transactions, tasks, queries reports etc. throughout all the business components. You can then add your own variations to Tasks and reports, without programming.

“ProphecyOpen is delivered to you in a ready to use state, and you can implement it without technical knowledge.”

3

Getting The Best Result For Your Organisation

As well as costing a fortune, implementation of a financials system can cause major headaches to an organization. You may be forced to change your way of doing business because of inflexible software or to spend more money to change the software to fit your real needs. This is Business Process Re-engineering (BPR) by coercion, with no benefit to your business!

ProphecyOpen takes the opposite approach – BPR for the business' sake. It is so easy to change, that you have two choices:

- **Get off to a quick start by using the supplied Tasks, and make your changes later, in a controlled fashion**
- **Tailor the system, knowing that it is easy for your own staff to do, and that decisions taken now can still be changed later if you need to.**

This is Business Process Reengineering (BPR) at its best – your only decision criteria are the benefits to your business, not the limitations of your computer systems.

ProphecyOpen's Object Framework

ProphecyOpen allows you to assemble your own software by using its tools. You can use ProphecyOpen's library of business object components to create your new system, and then incorporate it into ProphecyOpen seamlessly. The ProphecyOpen look and feel is 100% preserved.

You can even assemble your own software using ProphecyOpen's technology, and operate it as a completely separate entity from ProphecyOpen.

These new systems will look and behave like ProphecyOpen, giving you an instant benefit - everyone that knows how to use ProphecyOpen will have a head start on learning the new system.

4

Integrated Design

ProphecyOpen does not suffer from having separate program modules for each subsystem with hard boundaries. In fact, our component-based architecture really removes the need for accounting modules at all. You are free to call your subsystems what you like, and create Tasks which span them.

Ease of Use

In any organization, there will be many different people using the financials system. Some of these will be experts, knowing every little detail of how to use the facilities provided. Others will be occasional users, who don't want to re-learn the system every time they need it.

One of the major design goals for ProphecyOpen was that it should be intuitive - you don't need to be an expert to be able to make good use of it. At the same time, those people who are experts are not slowed down by facilities for the less experienced.

And because ProphecyOpen looks and behaves consistently in all areas, there is no need for expensive re-training should a staff member need to work in a new area. Once they know how to use ProphecyOpen, they will be comfortable in all areas of the business.

Sample Business Components

ProphecyOpen covers all the major areas of your enterprise:

- Financials
- Procurement
- Distribution
- Asset Management

ProphecyOpen is multi-company, multi-currency, and multi-language and operates across industry sectors. You may choose to implement some or all applications together, or individually.

ProphecyOpen Financials

ProphecyOpen's complete integration of components means that your staff don't need to spend their time calculating and posting summary transactions from subsidiary systems, or doing lots of manual entry. Instead, your accounting personnel can focus on interpreting the figures, resulting in real improvement for your business. ProphecyOpen provides all the information you need to improve your planning and decision making, quickly and accurately.

The features described here are just **some** of the many business features which can be set up in ProphecyOpen. Using the power of Tasks and Business Rules you can assemble your own business features, your own tables in the database, your query screens and reports. Without programming.

ProphecyOpen Financial components include:

■ **General Ledger**

ProphecyOpen's GL supports multiple companies and multiple currencies, and incorporates full consolidation processing for the complex organizations of today. It is fully integrated with all the subsidiary components, eliminating duplicate entry or messy interfacing routines.

■ **Budgeting**

The Budgeting facilities help you with the often-tedious processes of setting your budgets. Just specify your general rules for budgeting, and ProphecyOpen will perform the allocation of budget amounts across your structure automatically, using either top down or bottom up techniques, with unlimited budgets and budget revisions.

■ **Project Costing**

ProphecyOpen's Project Costing component helps you keep track of your all-important projects in their own ledger. Project Costing is fully integrated with the General Ledger, providing an accurate picture of your costs at all times.

■ **Cost Allocations**

The Cost Allocations component gives you powerful features to allocate costs to the correct accounts based on your rules. Your staff no longer need to spend hours calculating the various allocations and then applying them manually - ProphecyOpen does it all for them.

■ **Bank Reconciliation**

The best profit position in the world is of little use without good cashflow. ProphecyOpen's Bank Reconciliation component automatically collates cash transactions from all ledgers, and matches them with your bank statements, giving you an accurate picture of your cash position at any time.

6

ProphecyOpen Procurement

The ProphecyOpen Procurement components manage the all-important purchasing cycle, your way. From the requisition through acceptance of the goods to payment of the supplier's invoice, you can define your own requirements. Perhaps you need an inspection phase after the goods have been received. Or perhaps your purchases are mainly services, so you don't need a goods receipt step.

“ProphecyOpen lets you run things either way, or any way in between.”

ProphecyOpen's Procurement components are of course tightly integrated with the Financials through Accounts Payable, and if you wish, with Distribution through Inventory. The features described here are just some of the many business features which can be set up in ProphecyOpen.

Procurement components include:

■ **Accounts Payable**

Control of costs is a crucial issue for all businesses today. The Prophecy Accounts Payable component helps you to manage this all-important area.

■ **Purchasing**

ProphecyOpen's Purchasing component improves your buying power by keeping track of your suppliers and helping you choose the best one for any purchase. Complete tracking of the purchase is provided, right up until the invoice is paid.

■ **Purchase Requisitions**

If you have a buying department, which accepts requisitions from around your organization, then the Purchase Requisitions component will streamline their processes. ProphecyOpen lets you define your own authorization rules, and can even suggest the most appropriate supplier for the transaction, and generate the purchase order automatically. Your buying department can now concentrate on negotiating the best deals, rather than being buried in paperwork.

■ **Purchasing Contracts**

If your organization issues Requests for Quotations or Tenders for major purchases, then you know how important it is to manage the responses correctly, and to ensure you select the right response when awarding the all-important contract. ProphecyOpen's Purchasing Contracts components help you manage all phases of the process, cutting down on paper work, and leaving more time for evaluating the responses.

7

ProphecyOpen Distribution

Just like the rest of ProphecyOpen, the Distribution components can be tailored to add the business features you need to those we provide. So for example, your Sales Order Entry staff can use an entry screen which contains exactly the information they need to enter - no more and no less.

“ProphecyOpen’s Distribution facilities take care of paperwork that goes with supplying the goods.....

Leaving your staff free to look after the things that really matter – taking more orders, looking after customers and building that all-important loyalty.

ProphecyOpen’s Distribution components include:

■ **Accounts Receivable**

ProphecyOpen’s Accounts Receivable component gives you all the tools you need to manage the cash collection function, and simplify the allocation of payments to your customer’s accounts.

■ **Order Entry**

The Order Entry component provides for efficient entry of order details, with immediate checking of product availability and reservation of stock. It also incorporates powerful user-defined pricing mechanisms to ensure that the customer’s invoice is calculated correctly the first time.

■ **Sales Reporting**

ProphecyOpen comes complete with a number of pre-defined sales reports, covering the needs of most businesses. You can also use ProphecyOpen’s POWER Report Writer to generate your own special reports.

■ **Inventory**

ProphecyOpen helps you to achieve the balance by maintaining an accurate detail of all stock levels at all times. You can see the status of each of your locations at the push of a button. ProphecyOpen also supports efficient stock replenishment processes, according to your own rules.

■ **Catalogue**

If you use NATO codification for your inventories, then the ProphecyOpen Catalogue component is for you. The categorization features provided are very powerful, to meet all your reporting and cross-referencing needs.

ProphecyOpen Asset Management

Many organisations have a large investment in assets – either tangible ones like machinery and vehicles, or intangibles like intellectual property. And of course, the most important asset of all, your people. ProphecyOpen's Asset Management components help you to keep control of and maximise your investment in assets.

ProphecyOpen's Asset Management components are integrated with the Financials through General Ledger and Project Costing.

ProphecyOpen's Asset Management components include:

- **Plant Costing**

Use ProphecyOpen's Plant Costing component to keep track of the revenue and expenses associated with your Plant and Equipment, as well as managing maintenance schedules.

- **Resource Costing**

If labor forms a major portion of your organization's costs, and then you know that it is essential to track these expenses closely. ProphecyOpen's Resource Costing facilities ensure that employee time is promptly and correctly allocated to projects, items of plant, or GL Cost Centers.

- **Fixed Assets**

Many organizations have a huge investment in Fixed Assets, so it is vital to manage them properly. ProphecyOpen's Fixed Assets component is closely related to the Plant Costing component and is a fully functioned asset register, supporting flexible depreciation rules and monitoring facilities.

Getting The Business Features You Want

While ProphecyOpen comes with 'one of everything' - a complete complement of transaction entry tasks, queries and reports, its real power is in the ability it gives you to change and add to all the business functionality so that you get an exact fit for your business.

Just as we created the business features, which come standard with ProphecyOpen, **you can create your own business features**. One hundred percent tailorability to your business was the overriding ProphecyOpen design goal. All without programming.

Business Tasks

Organizations are changing. Many of the departmental barriers are down, and workflow techniques are being introduced which span departments and follow the logical course of a business process. Older financial systems, with their strict 'modules' separated by brick walls, are no longer appropriate.

ProphecyOpen breaks down the walls between departments, leaving you free to run your business your way.

You achieve this flexibility by creating Tasks. A Task is the ProphecyOpen mechanism, which controls a business function. A Task controls:

- The screen layout - which items appear where
- The business rules which validate and manipulate your data.
- How your database is accessed
- Security aspects

Tasks are an excellent concept - you can line them up to match all your specific business functions.

■ **Tasks and Workflow**

Tasks provide a structure in which you decide the jobs to be done, the flow of these jobs, and who will do them.

A major design goal is to interface to the top workflow systems around the world, letting you choose the one, which best suits your needs.

Example

In this example, we have created a Task called General Ledger lines. It will be used to post lines within a general ledger journal.

Clicking on the tabs reveals more screens, each with their own business rules. Fields can be positioned wherever you want them to be. You decide which tabs you want, and which fields are needed on which tabs.

■ Business Rules

There are hundreds to choose from, ranging from simple ones (such as checking that an item being entered is valid within a range) to complex processes such as stock and credit availability checking, funds availability, pricing, average costing and many more.

If you want to change the standard Tasks provided, or add your own Tasks, you simply select the business rules you want to apply to each field in the Task and ProphecyOpen does the rest.

■ Tailoring Your Database

You can even decide what gets stored in your database. You can add new items of data to screens and to ProphecyOpen's database, or change the standard data items in the database.

The screenshot shows the 'Allocation Batch [Insert]' window. The left pane (Main tab) contains the following fields and controls:

- Allocation Batch: 101
- Group: Default
- Description: Electrical maintenance contract
- Processing Mode:
 - Posting
 - Reporting
 - Clear Allocation Group
- Run button

The right pane (Main tab) contains the following fields and controls:

- Transaction Date: 14-mar-2001
- Allocation Type:
 - Normal
 - Accrual and Reversal
- Table with columns: Date/Time, User, Version, Reference

Date/Time	User	Version	Reference
Insert			
Edit			
Authorise	(Not Required)	(None)	Audited 0
Last Post			Revision 0
Suspend	Record not suspended		
- Most Recent Processing: Review
- Database: Maintenance Update by a Task
- End User: Inserted by System function
- Save and Cancel buttons

The Workbook

At the heart of ProphecyOpen is the workbook - the day-to-day working space within ProphecyOpen. It has been designed to model the way in which we all like to work - swapping around between many sets of related information, choosing to work on that which is relevant, but being able to see associated information at the same time.

Your Workbook Opens! But unlike a conventional book it opens downwards as well as sideways. This gives a tremendously powerful and flexible viewing area. Pages are opened simply by clicking on the spiral binding.

You can have up to four pages open at any one time and be working on any combination of these. Additionally, of course, you can have multiple Workbooks open, and swap between them.

Manual Payments (Insert)

Payment | Amount | Acctg | Audit

Payment Reference: 100000 | Input Site: [Default Site]

Inv/Gds/Ord No.: 5 | Document Date: 14-mar-2001

Task Code: PPaytHManual | Transaction Date: 14-mar-2001

Bank: Template for Bank Rec Test

Supplier Code: mres001

Supplier Address: No address selected

Pay-to Supplier: 100000

Payment Address: No address selected

Payment Currency	Exchange Rate	Posting Currency
ATS	1.000000	ATS

Gross Payment Value: 100,000.00

Settlement Discount: 0.00

Total to Pay: 0.00

With-Holding Tax: 0.000 %

Payment excl. Disc. WHT: 0.00

Comments:

Post

	Gen Ledger	Purchasing	Accts Pay
Main Year/Period	2001 3	2001 3	2001 3
Alternate Year/Period	2001 1	2001 3	2001 1

Purchase Location in GL: [Default]

Supplier Location in GL: [Default]

Supplier Dept in GL: [Default]

Transaction Status: Being Entered

Update Status: [Immediate Update]

GL Interface Status: [Awaiting GL Interface]

GL Transaction Num: 0

	Date/Time	User	Version	Reference
Insert				
Edit				
Authorise	[Not Required]	[None]	Audited	0
Last Post			Revision	0
Suspend	Record not suspended			

Most Recent Processing: Review

Database: Maintenance Update by a Task

End User: Inserted by System function

Save **Cancel**

Payment | Amount | **Acctg** | Audit

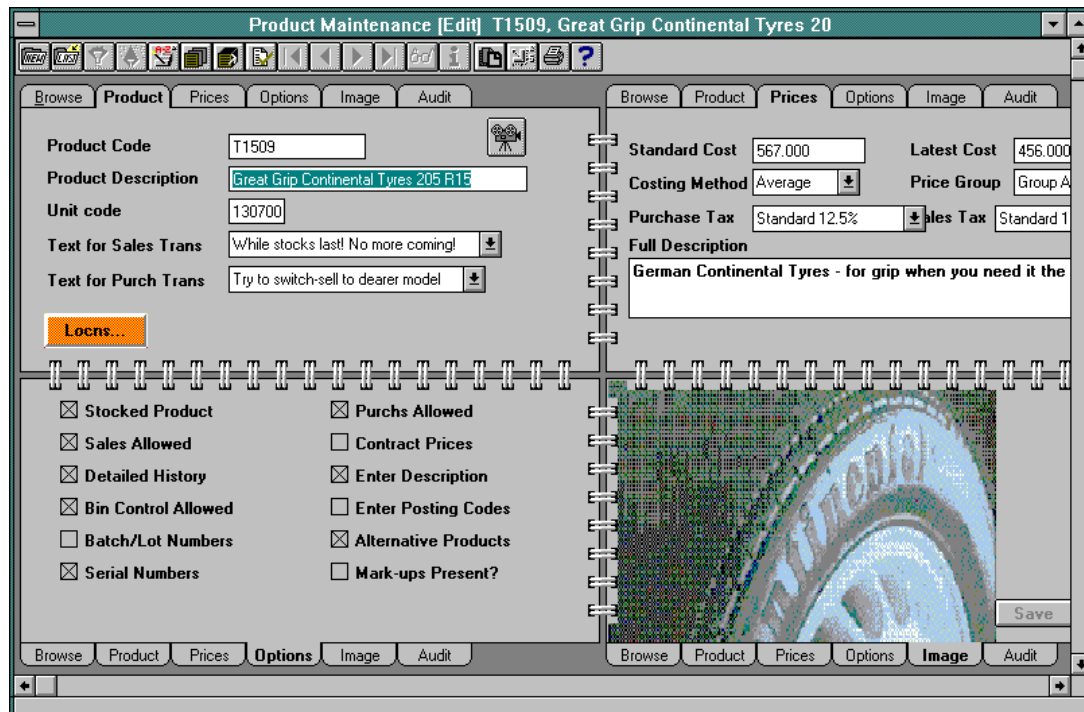
Payment | Amount | Acctg | **Audit**

Tailorability

You can have a different workbook for every business task, with different tabs and different items on each page.

Your workbooks need not look like those of any other enterprise. You can have them looking just as you want. The items you can change in your workbook without programming include:

- which fields are displayed
- where they are displayed
- field titles
- field sizes
- colors
- fonts
- number and names of tabs
- columns on the browser
- browser selections
- bold
- scroll bars



Your Personal Tools

Getting around ProphecyOpen is easy. It's an intuitive system. Its navigational tools utilize the very latest technology for the benefit of your business. These tools enable you to use ProphecyOpen, as you need to assist you in doing business. They include:

■ **Menus**

ProphecyOpen's menus are extremely flexible. You can call menu items anything you want, and you can put them in any sequence, and any grouping. And of course ProphecyOpen provides multiple levels of security.

■ **Button Bars**

The ProphecyOpen Button Bar is a launch pad for your day to day jobs. You can have one button as a Task or multiple Tasks on one button (revealed by a pull down menu). Those who regularly use many tasks can have multiple button bars. Standard Button Bars can be set up which are available across the whole enterprise, but which you can personalize. You can also put your own icons on your buttons to identify your special Tasks.

■ **WorkBook**

As previously described, the Workbook is set up exactly as you want it to look and operate. What could be more natural, or more efficient?

■ **Spreadsheet Interface**

There are many powerful spreadsheet tools available on PCs today. The ProphecyOpen Workbook Spreadsheet Interface option enables you to browse the relevant data then cut and paste your query to your favorite spreadsheet for alternate presentation or manipulation.

■ **Query Filters and the Filter Whiz**

The ProphecyOpen Filter Whiz provides an easy way of selecting the information you want to see. You specify what you want, by selecting from choices displayed **in your language**. For example, 'Products beginning with 'ABC' and Price greater than \$50 or less than \$10'. The Filter Whiz prompts and guides you through the selection process, and translates your choices into computer jargon. (Actually into SQL). So you don't need to be SQL-literate to get exactly the data you want. However, if you know SQL you can specify your own complex queries within ProphecyOpen's queries.

■ **Personal Queries**

Having defined your query, using the Filter Whiz or manually, you can then save it for future use. So frequently used queries can be re-run as often as you wish without having to re-define them each time.

Talking To The World

Each year it appears the world grows smaller. More and more we are doing business with people in other countries who don't necessarily speak the same language.

“Add to this variable decimal places in money fields and country-specific accounting features, and you have a truly international product.”

■ **Multiple Languages**

ProphecyOpen's multi-language facilities enable screens to be displayed in the preferred language of your individual users. So, if one user speaks French and another German, they can each see their screens in their own language. Additionally, your customers and suppliers can receive their documents in their chosen language. As well as multi-lingual screens, prompts and messages, ProphecyOpen also supports multi-lingual data in the database.

■ **EDI**

ProphecyOpen handles EDI input/output for all the major EDI protocols. Any ProphecyOpen Task can be used as the basis for an EDI transaction, making EDI as tailorable as ProphecyOpen itself. In fact, you can use the very same Task for online input and EDI input, so you only need to set it up once.

■ **Internet**

ProphecyOpen utilizes thin client architecture to operate under a Web browser. This means that your staff can access ProphecyOpen remotely via the Web, as well as when they are in the office. In addition, ProphecyOpen's POWER reports and graphs can be output in HTML format, so that they can be published on the Web.

■ **E-Commerce**

Whether you want to sell direct to the public via the Web, or provide access to a number of client companies, ProphecyOpen helps you take advantage of the opportunities created by e-commerce.

■ **European Economic And Monetary Union (EMU)**

ProphecyOpen has been designed for Euro currency. It supports the phased dual currency approach, so you can use your local currency and the Euro, until you are ready to make your own decision on when to convert to using the Euro for all your transactions.

Reporting And Executive Information

■ The POWER Of Reporting

Ask any CFO what they need from a financial system and the answer will be 'information - timely, accurate and usable'. The ability to extract information from the system is even more important than the ability to get it in smoothly. The reporting facilities provided by any software are therefore crucial to its success.

ProphecyOpen recognizes the importance of this area, and has provided the POWER Reporting facility to exceed your expectations. You decide what reports you want what you want them to contain, their sequence and printed format – and all without programming!

■ Standard Reports

A set of standard reports is provided with POWER - commonly required reports in every application area that most users need.

These are, of course, subject to your control and manipulation, and can be varied just as if you had created them yourself. The only reports you can't change are the mandatory audit reports, which ProphecyOpen insists on producing, to preserve the integrity of the system.

■ Designing Your Own Reports

Unsurpassed flexibility is provided for you to model a report you want. You can base it on an existing one, or start from scratch. You can see your report as you design it, decide the contents and sequence, sub-titles /headings, break and total points, and whether the format is cross tabular.

Extremely powerful selections can be incorporated in a report and stored for use each time that report is printed.

Underlying Architecture

This section aims to give you a brief overview of the technological foundation of ProphecyOpen.

■ **Hardware Portability**

ProphecyOpen is available on all major hardware platforms, including all the key UNIX and Microsoft Windows platforms and NT.

■ **Graphical User Interface (GUI)**

The GUI is firmly established as the most friendly and easy to use communication between users and the computer. ProphecyOpen's GUI automatically changes its appearance to suit each hardware and windows environment, e.g. Windows 3.1, Windows 95, Windows NT, Motif etc. The ProphecyOpen workbook is an outstanding example of innovative GUI.

■ **Client Server**

ProphecyOpen supports numerous client server models for those who need to mix and match hardware to regional demands. Business processes can be distributed to available hardware as required.

■ **Object Oriented Components**

The very latest in leading edge application development technology was used to deliver to customers both a system and a Prophecy Framework which is timeless.

ProphecyOpen components are designed using Object Oriented (OO) techniques, giving a much more efficient 'lean' system internally, and providing objects which users can use and manipulate to build their own financials (or other) systems.

In a nutshell, an OO system

- gives better integrity
- provides re-usability, which avoids duplication
- produces much less source code
- leads to fewer errors
- provides rigid consistency of standards and look and feel
- is easier to enhance
- provides users with useful objects with which to build systems

These are all benefits to you, not just to the developer

Who is Prophecy International?

Prophecy International is a leading software company with over 20 years industry experience. Prophecy has built a strong reputation worldwide for its innovative business software solutions and has established offices in Australia, the United Kingdom, the United States, Singapore and Malaysia. The Australian head office is also the support hub for a worldwide distribution network of Business Partners covering over 20 countries.

Prophecy International listed on the Australian Stock Exchange in April 1998 and has since reinforced its strong global presence.

Prophecy uses the latest object-oriented technology to design and develop its world class enterprise wide software solutions. The company has a well-deserved reputation for software innovation. Its e-Foundation product suite provides enterprises with a fully tailorable front-end to back-office e-commerce solution for medium to large organizations.



Prophecy

Prophecy Interational Pty Ltd
41 Dequetteville Terrace
Kent Town
South Australia 5067
Telephone + 61 8 8364 4411
Facsimile + 61 8 8364 4454
info@prophecy-open.com.au

Prophecy Americas Inc
7951 E Maplewood Avenue
Suite #333
Englewood Colorado 80111 USA
Telephone + 1 303 771 2666
Facsimile + 1 303 771 5388
info@prophecyopen.com

Prophecy Europe Ltd
15 Reading Road
Pangbourne
Berkshire RG8 7LR United Kingdom
Telephone + 44 1189 845 448
Facsimile + 44 1189 845 366
info@prophecy-open.co.uk